



Accops HyWorks v2.5

Manual Installation Process of HyWorks Client

Last Update: 4/18/2016

©2016 Propalms Technologies Pvt. Ltd. All rights reserved.

The information contained in this document represents the current view of Propalms Technologies Pvt. Ltd. on the issues discussed as of the date of publication. Because Propalms must respond to changing market conditions, it should not be interpreted a commitment on the part of Propalms and Propalms cannot guarantee the accuracy of any information presented after the date of publication.

This document is for informational purposes only. Propalms makes no warranties, express or implied, in this document.

Complying with all applicable copyright laws is the responsibility of the user. Without limiting the rights under copyright, no part of this document may be reproduced, stored in or introduced into a retrieval system, or transmitted in any form or by any means (electronic, mechanical, photocopying, recording or otherwise) or for any purpose, without the express written permission of Propalms Technologies Pvt. Ltd.

TABLE OF CONTENTS

Introduction	2
HyWorks Installation on Hydesk Devices.....	2
Enabling SSH on Devices.....	2
Limitation.....	3
Copying the HyWorks build on device.....	4
Installing HyWorks Build.....	6

INTRODUCTION

This document aims at providing step by step information for installing HyWorks Client on HyDesk Hy3000 or Hy4000 without using skyControl Server or HyWorks Controller.

Why Without skyControl Server?

HyDesk devices can be easily migrated to HyWorks by upgrading them using skyControl server, but every customer does not have skyControl environment ready and in such case this document can help in achieving the purpose of installing HyWorks build on devices without skyControl server.

The same process can be followed to install HyWorks upgrade patches on HyDesk devices manually.

HYWORKS INSTALLATION ON HYDESK DEVICES

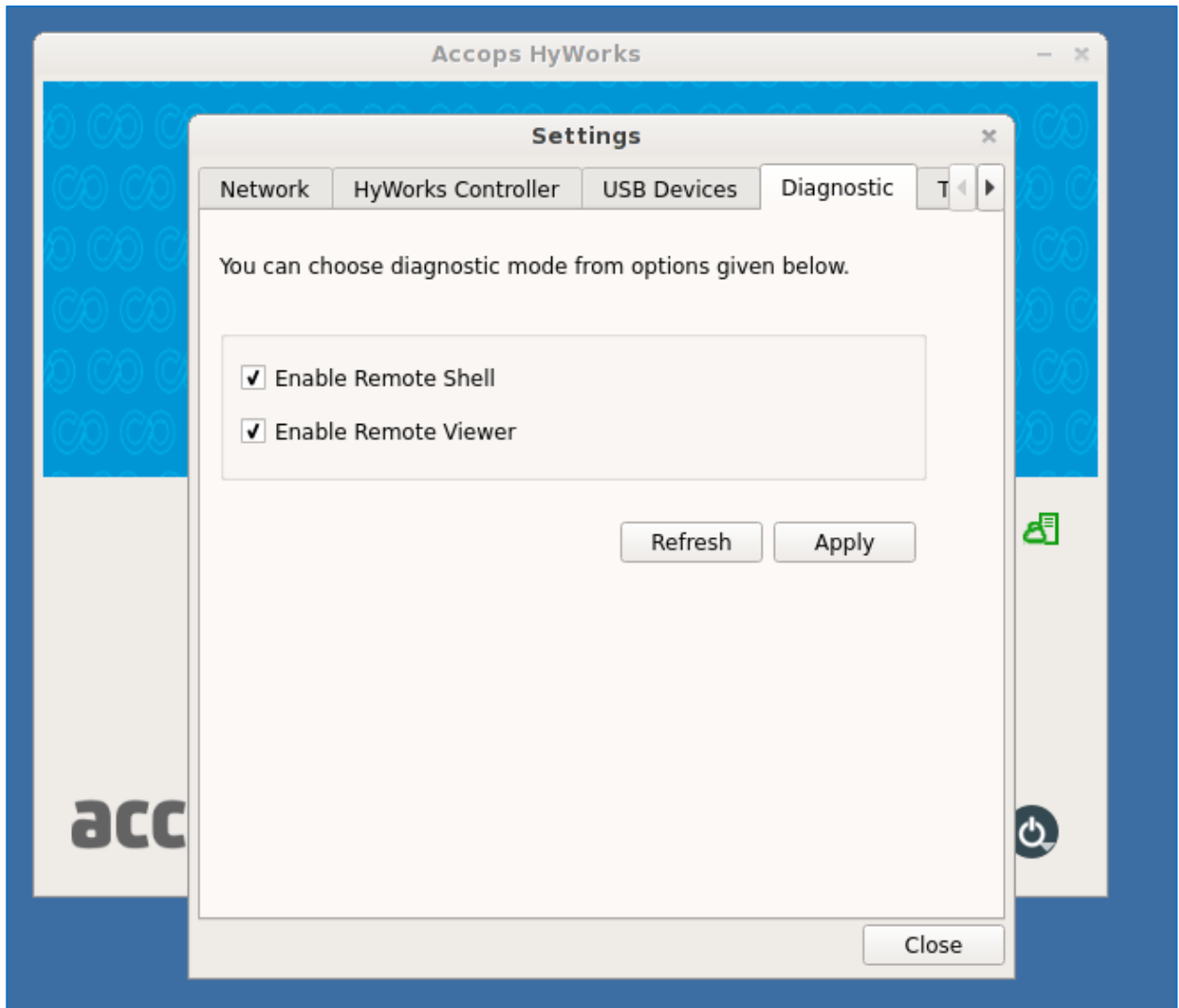
The process of installing HyWorks build on existing HyDesk devices can be separated out in 3 different steps:

1. Enabling SSH on devices (Required to copy and run the setup)
2. Copying the appropriate version files
3. Installing HyWorks Build

Let us understand each of these steps in details.

ENABLING SSH ON DEVICES

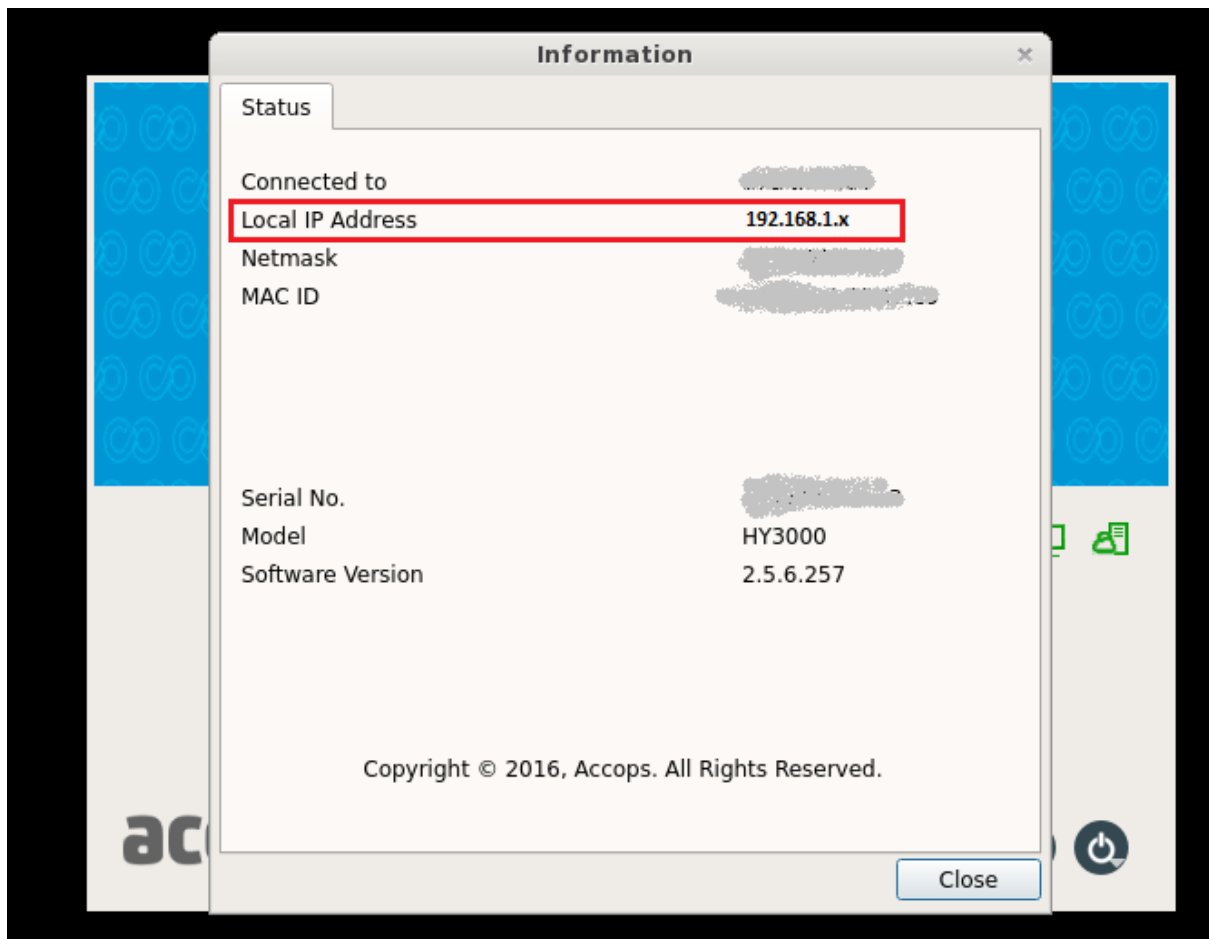
1. Power on the Device and attach network cable
2. On Login Screen click on **Settings** button
3. In **Settings** window Go to – Diagnostic tab
 - a. Select checkboxes **Enable Remote Shell**



- b. Click on Apply button
- c. Click on Close button to close the Settings window
- d. SSH is enabled on the device
Click on Info button to check the device IP details – Note down the device IP address

LIMITATION

Enabling SSH/Remote Control feature is available from skySpace GA versions only and thus enabling the SSH on devices will work only for the devices running skySpace GA or greater versions.

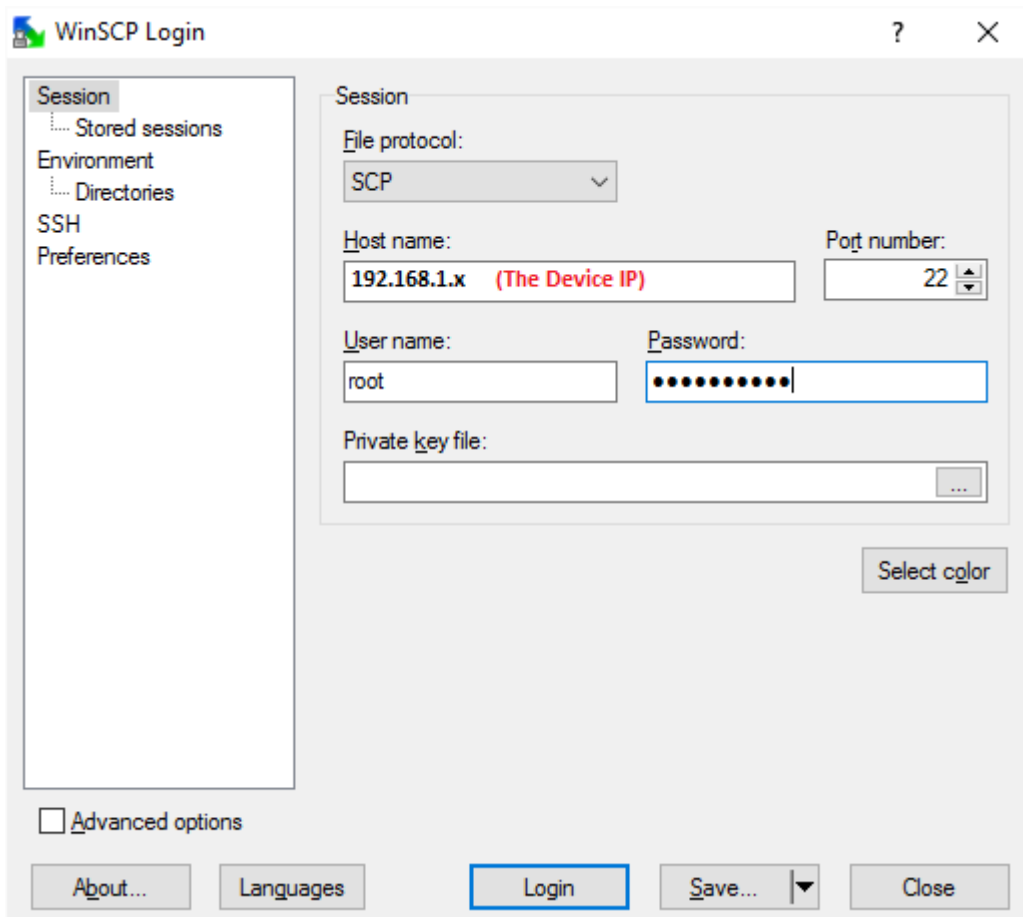


COPYING THE HYWORKS BUILD ON DEVICE

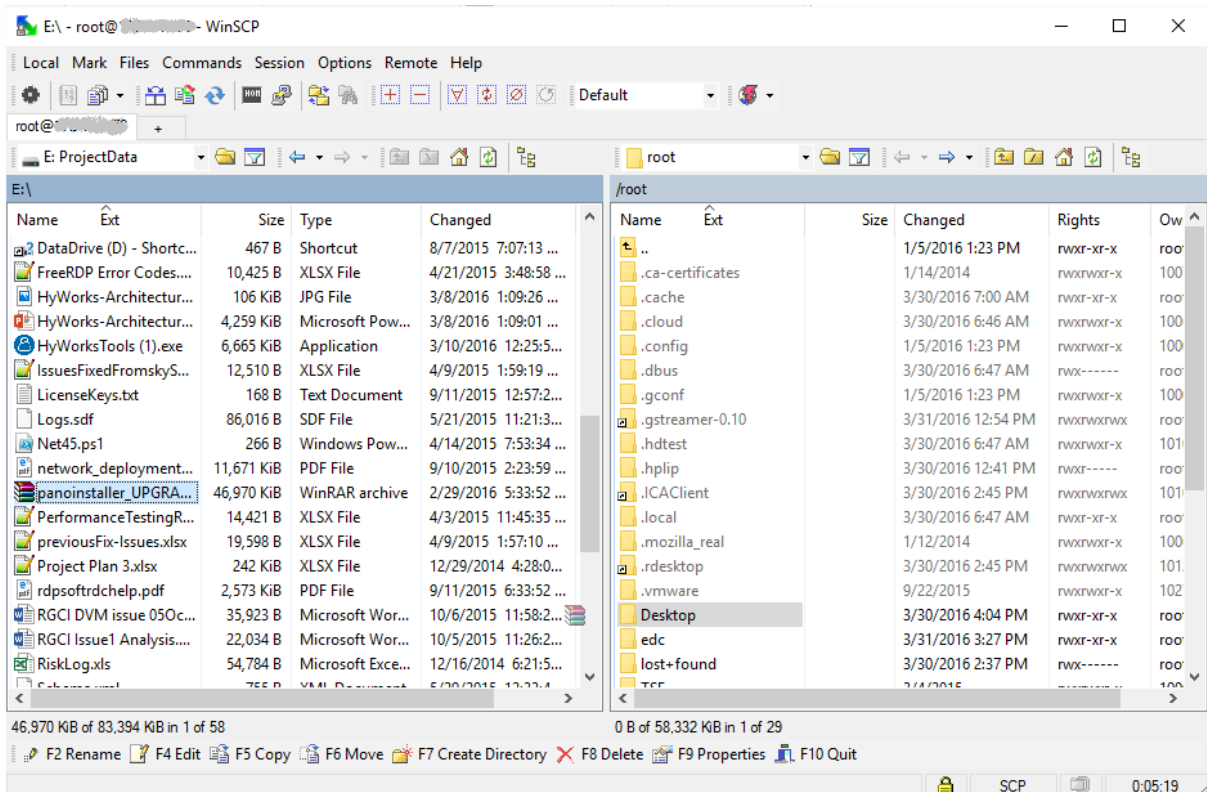
1. Download HyWorks build on your desktop from the below location:

[TS100 Upgrade Hotfix \(To Migrate from skySpace to HyWorks\)](#)

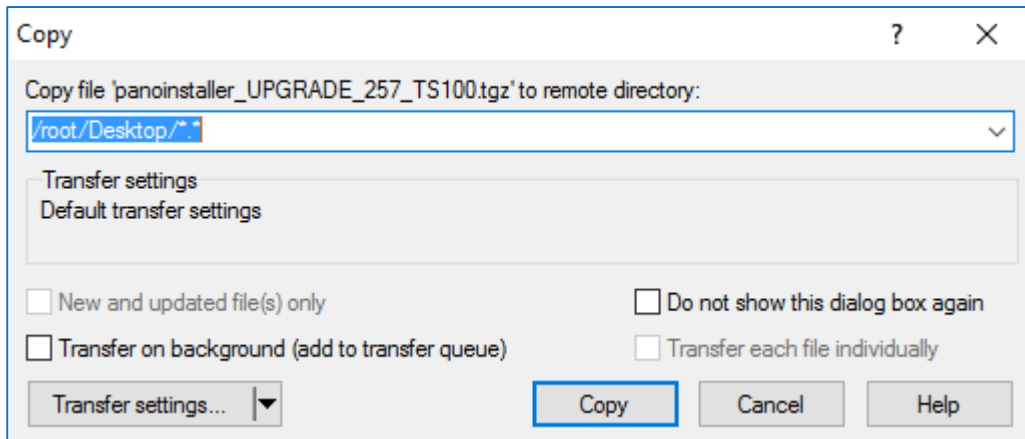
2. Download and install WinSCP software from internet on your desktop
3. Run WinSCP and On **WinSCP** login screen
 - i. Select **Protocol** as SCP
 - ii. Hostname as IP of TS150/TS100 device
 - iii. **Username** as root
 - iv. **Password** as (Please contact [Propalms Support](#) to get the default password)
 - v. Click on **Login** button



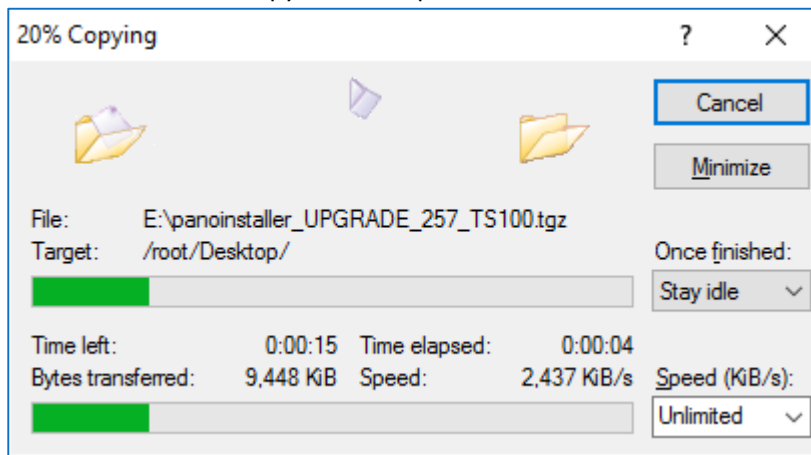
4. In WinSCP Session – On Left hand side (showing files of your desktop)
 - a. Browse to the location where the HyWorks build is downloaded
 - b. Select the '**panoinstaller_UPGRADE_255179_TS100.tgz**' file and drag-drop to Desktop folder on right side (Showing TS150 device)
 - c. Click on Copy



- d. Click on Copy button, once Confirmation dialog is displayed



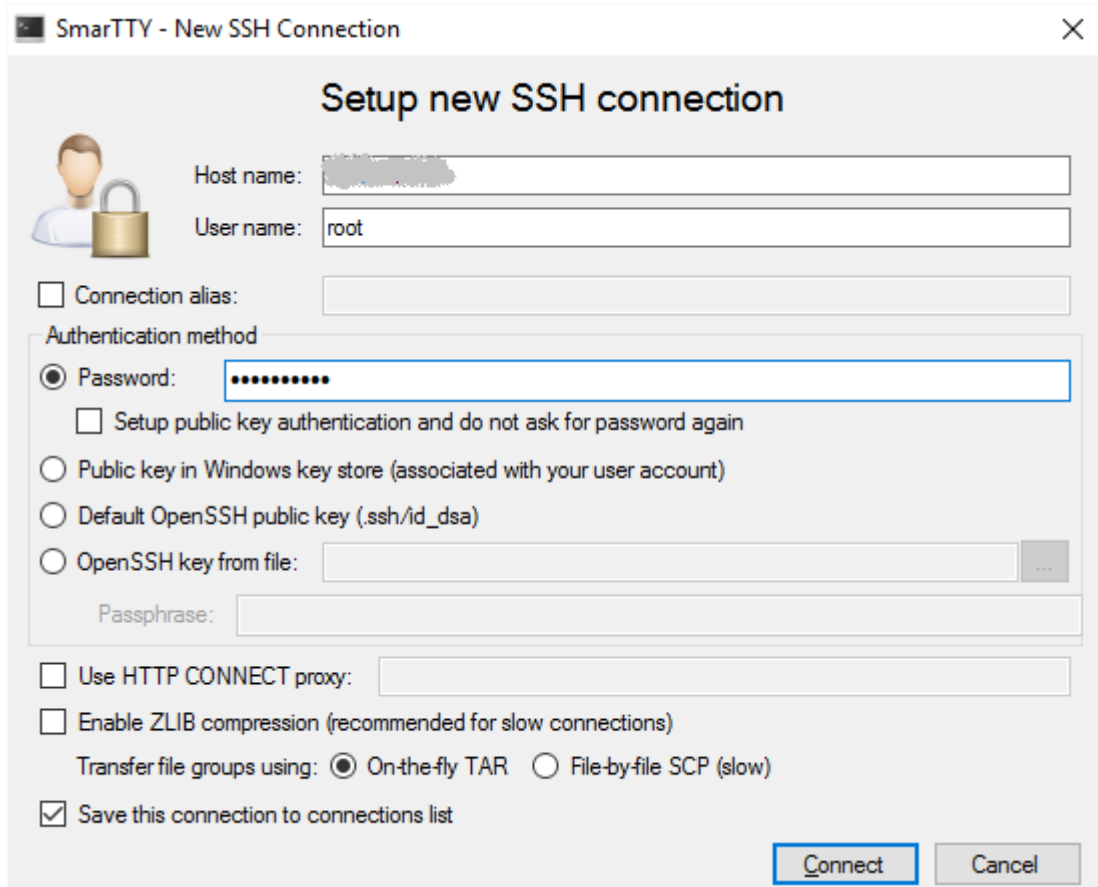
- e. Wait for file copy to be completed



5. HyWorks Build is available for installation -> Proceed to next step

INSTALLING HYWORKS BUILD

1. Download putty application from internet
2. Take **ssh** connection of the device using following details:
 - a. Hostname as IP of the device
 - b. Username as root
 - c. Password [Please Contact [Propalms Support](#) to get the default password]



3. In the SSH session run the following commands

a. **cd Desktop/**

Desktop - Directory where we have copied the HyWorks build

b. **ls**

To list the content and verify if copied file 'panoinstaller_UPGRADE_257_TS100.tgz' is available on the directory)

c. **cp panoinstaller_UPGRADE_255179_TS100.tgz /tmp**

Copying the files to tmp directory

d. **cd /tmp**

To directory where file is copied

e. **tar -xvf panoinstaller_UPGRADE_255179_TS100.tgz**

To extract the files - This will create a directory panoinstaller on the same location

f. **cd panoinstaller**

Extracted files from command#3 are available in this directory

g. **./install.sh install / \$HOME/edc.log `pwd` /tmp/edcbkp/ 255179**

Running the installation script

4. Installation will be done and message 'All is Well' will be displayed

5. Device is successfully upgraded with HyWorks release.

6. Open Device Settings – HyWorks Controller and change the HyWorks Controller settings to connect with HyWorks Controller